

# The Pine Mountain Trail



## Newsletter of the Pine Mountain Trail Association, Inc.

43rd Year 1975-2018

Fall 2018 Number 117

“Service is the Rent We Pay for Our Space on Earth”

The Pine Mountain Trail...conceptualized, planned, constructed and maintained by dedicated volunteers.  
No tax money is used to support the Pine Mountain Trail.

### Volunteers STILL needed to help on the PMT

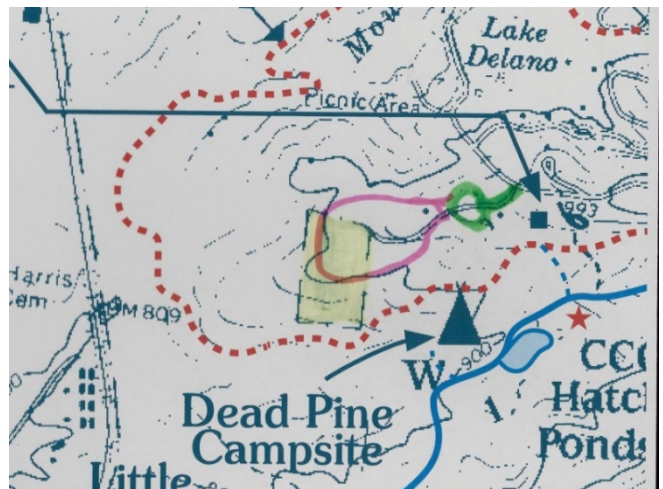
In the last newsletter we used the whole first page talking about the need for more volunteers to work on workdays. Well we still haven't had any change in the number of volunteers showing up for workdays the last 6 months. We get emails and posting on Facebook telling of problem sections on the trail and reporting blown down trees, and “Likes” and thank you for work on the trails. I encourage those reporting or commenting to come help out on the next workday. On the recent workday we had seven volunteers show up.....Seven folks and we needed 17 so we could split into two teams. It took us 7 nearly three hours to weed-eat/brush cut and prune a half mile section of the Beaver Pond Trail!

Folks we have a serious problem. In the fall of 2016 the drought began to kill a bunch of trees along our trails. The areas around Dowdell's Knob, White Candle Trail and Beaver Pond Trail south of Ga 190, some of the Sawtooth Trail, around Rocky Point/Mile 18, near Fox Den Cove Parking Lot, and several others places exhibit hundreds of dead and dying trees. It is no exaggeration to say 30% of the trees around Dowdell's Knob are dead or dying. Many of these are dropping limbs weekly. The dead trees are opening up the canopy and weeds are a real problem along the trails. We need lots of volunteers. Now we have some of you who can't physically work on the trail anymore, but like a recent volunteer did, you can meet the group as we start out with snacks/donuts and chocolate milk and juice and wish us well. Main thing is, if you haven't helped recently and YOU will work just ONE workday the next few months we would likely have the help we need to complete tasks.

**PMTA Pig Out is coming** .....later than usual this year on November 17th.

Our PMTA Pig Out will again be held in the newly renovated Large Group Camp Dining Hall now known as the FDR EVENT CENTER. see details on hike and dinner on Page 5

**Proposed Limited Abilities Trail-** In April of 2017 the PMTA board contacted the owner of the land-locked piece of private land near No Name Parking Lot. The association purchased the land and closed on the tract in September 2017. The primary purpose of the acquisition was to keep the land from getting into the hands of a private developer/owner who might subdivide and develop the property. We recently sold the land (at our cost) to the Georgia DNR. They will add it to the FDR Park. This is the third transaction of this type the PMTA has done with the state to protect the park from development. This property is fairly flat and would be an ideal location for a stand-alone half mile plus “Limited Abilities” trail. Meaning an ADA route from a paved parking lot with a paved/packed gravel surface for use with wheelchairs and those who cannot walk on grades of more than 5%. The PMTA is working with the state to develop such a trail and will keep you posted on progress of the plans. The land is surrounded by the Mountain Creek Trail. To the right is a sketch of the proposed drive and trail onto the tract.



If you misplace your membership card or just need a replacement, let us know via email from our website . Numerous volunteers from our membership have helped the PMTA grow and flourish for more than 43 years. We continue to grow. The scope and reach of our association in promoting and maintaining the **Pine Mountain Trail** will always be determined by our membership. Let's all do our part to keep the association vibrant and to spread the word about our trail.

The **Pine Mountain Trail Newsletter** is a publication by the Pine Mountain Trail Association, Inc. The editor and board members of PMTA retain the right to accept and /or edit any material submitted for publication or posting on the website or the PMTA Facebook pages . : Jim Hall- PMTA Newsletter Editor – 6743 Audubon Drive –Columbus, Ga. 31909.

## MEMBERSHIP REPORT

*From Jerry Brown*

**As of September 2018..... 389** annual members with 56 organizations, 205 families and 128 individual members. **224** LIFE members: 119 families and 87 individuals and 18 organizations.

Most all membership transactions (new and renewal ) were done via our website. All maps ordered came from our website MAPS OF THE TRAIL section.

Since October of 2017 we have had the following new annual memberships: 5 organizations, 32 families, 20 individuals. New LIFE members include 3 families, 2 individuals for a total of 62 new memberships.

Note: all new memberships are two year ones not just for one year.



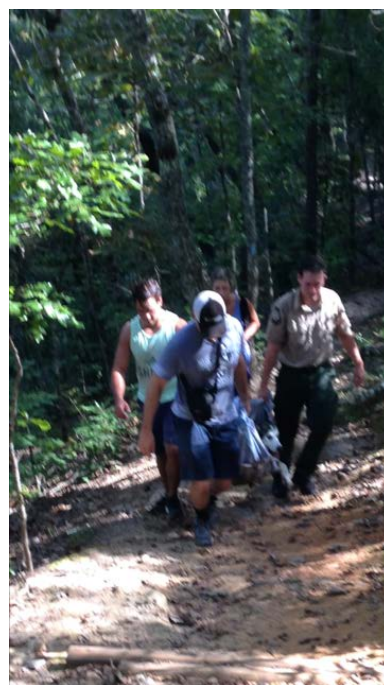
### Bunch of new water-bars

Back on August 25<sup>th</sup>, a group of us met up on the Beaver Pond Trail north of GA 190 and installed 33 water bars. This section of trail was washed out badly right down the center. On a Saturday before that, we cut the weeds and vines along this trail section for about half a mile. Boy was it grown over the trail. Michael Wade was the driving force for us to get all this done and showed up both workdays.



### First time on the PMT (that I know of) : A Dog Rescue

On September 18 I got a call from the FDR manager in training Stephen about 2:45 pm asking for help with a situation over just east of Csonka Falls. Seems two hikers with their large 90 pound huskie were hiking and the dog suddenly collapsed and could not get up. They first thought he was too hot and got him into the nearby creek. I took off to the park and met Stephen with the Polaris and I drove it in to Bumble Bee Ridge Campsite and we hiked east from there. Ended up the dog had to be carried out. The owners took the dog to a vet and it was determined the dog had been snake bit! Dog owners had left Rocky Point Parking Lot and hiked west on the Beaver Pond Trail and then the PMT. They figured the dog got bite when he was off the trail "to go" back near Mile 22.8 after getting off the Beaver Pond Trail. Dog recovered nicely and was up walking around the next day after several injections.



## Pig Out 2018 is coming Saturday, November 17th

The 43rd Pine Mountain Trail Association annual dinner (Pig Out) will be held at the Large Group Campground Dining Hall/FDR Event Center. The reason we are having it much later than previous years is that the Dining Hall is booked for weddings and other events till then.

There will be a moderate rated 4 mile pre-Pig-Out hike from the Country Store Parking Lot (starting actually at Mile 0) to the Park Office Parking Lot starting at 1 p.m. (so arrive earlier than that to sign the roster and possibly shuttle your vehicle to the Park Office). Help us celebrate another great year and our 43nd anniversary! Hikers who come to the 1 p.m. hike are welcome at the dining hall area just after the hike. The sign-in table will be set up by 4 p.m. Relax and visit with other PMTA members and guests. Please go to the sign in table first. If you have paid reservations (or need to pay upon arrival and have reservations) we will have pre-printed name-tags. Each person (adults and children) will receive a ticket to hold for door prizes. Having a name-tag lets us know you have signed in/paid for dinner. In order to avoid a wait to check in, please arrive and check in between 4 and no later than around 5:15. The pledge to the US Flag and blessing will be about 5:40. Dinner will begin serving at 5:50 p.m in 2 lines We of the PMTA will serve Country's Barbecue items including pork and chicken, hot dogs for kids (upon request on your reservation form,) coleslaw, potato salad, beans, stew, corn bread and light bread and their great iced tea. We will also have soft drinks (some diet), fruit flavored drinks and bottled water. Back for the 18th year will be Blue Bell ice cream treats for all. What program /speaker? To be announced . We will have some door prizes starting with kids prizes. As always, you are welcome to bring non-member guests. We will have some PMTA items for you to purchase (medallions, patches, and both the new 2017 topo and 2015 Kids maps.) Please pay for these separate from dinner.

The price of the Pig Out dinner is \$15.00 for adults , and still \$5.00 for children 5-12. Under 5 free. Please go ahead and make your reservations soon. **We have to hold reservations to about 130 due to space.** You can also make and pay for reservations from our website (see link from the homepage at [www.pinemountaintrail.org](http://www.pinemountaintrail.org).) Otherwise, send in the form below with your check by US mail. You may mail the form even if you do not mail your payment and plan to pay when you arrive. You can also EMAIL us your intent to attend with names to [PineMtTrailAssoc.\\_jim@msn.com](mailto:PineMtTrailAssoc._jim@msn.com) (there is an underscore between the period and jim ie: **.\_jim**) Having reservations helps us determine how much food we will need. We don't want to run short and we will not be able to take late reservations after we reach 130. Jerry Brown will check the PMTA PO Box for the last time on Tuesday November 13<sup>th</sup> . So help us by having your reservations made online, mailed/called or emailed to arrive before then. Any questions, call Jim Hall at 706-569-0497 and get directions if the trail map is not clear to you. Please make checks payable to: Pine Mountain Trail Association Mail to: PMTA, PO BOX 5, Columbus, GA. 31902 . On the outside of the envelope and on the check put : "PIG OUT RESERVATIONS".

**Directions:** From the park office travel east .4 mile then turn left onto off ramp BEFORE the stone bridge. At the bottom of the ramp turn RIGHT onto GA 354 under the bridge then straight onto what is now Kings Gap Road and follow the road down .4 of a mile to the GROUP CAMP ROAD on your left. Follow the road back nearly two miles to the dining hall. There will be signs along GA 190, 354 and Kings Gap Road directing you. **From Pine Mountain** (Ga 354), just stay on 354 for 2.9 miles till you go under the bridge and follow directions above.

-----

Make Checks payable to the PMTA and mail below to PMTA, PO BOX 5, Columbus GA 31902

### 2018 PIG OUT RESERVATION FORM:

Please make a reservation for \_\_\_\_\_adults \_\_\_\_\_children.

# of hot dogs\*\_\_\_\_\_

The reservations name is:\_\_\_\_\_

List the first and last names of all those coming with you so we can make a name tag for them ahead of time\_\_\_\_\_

\_\_\_\_\_

Enclosed is \$\_\_\_\_\_.\_\_\_\_\_ or We will be paying upon arrival. \_\_\_\_\_

Number of non-PMTA MEMBERS (guests) in total above \_\_\_\_\_

(Renew early to avoid missing a newsletter issue)

Date \_\_\_\_\_ Name \_\_\_\_\_

Address \_\_\_\_\_

Phone Number \_\_\_\_\_ Work number \_\_\_\_\_ E-mail address \_\_\_\_\_

Membership Category: ☐ renewing member ☐ new member

24-month

Lifetime

☐ Individual \$25.00

☐ \$200.00

\* for families and organizations, list names that cards should be issued to

☐ Family\* \$35.00

☐ \$300.00

☐ Organization\* \$50.00

☐ \$400.00

I wish to volunteer with the following: ☐ membership ☐ public relations ☐ board membership ☐ assist with monthly hike

☐ help with monthly workdays ☐ newsletter contributions ☐ *Adopt-a-Trail* section

### **PINE MOUNTAIN TRAIL LOGO STUFF**

Map prices are higher at FDR park office and Outside World in Columbus. See photos and how to order the stuff below at the STORE on the PMTA website [www.pinemountaintrail.org](http://www.pinemountaintrail.org)

Maps-- (new **2017 revised** edition) \$4.00

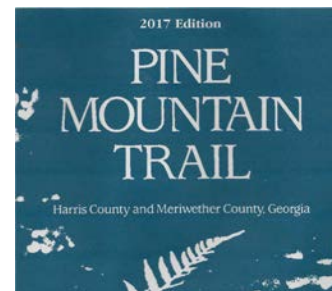
Kids Map (**2015 40<sup>th</sup> Anniversary** edition) CLOSEOUT priced \$ .50

Patches --The Pine Mountain Trail logo patch \$2.00

Medallion--Brass PMT logo hiking staff medallion \$3.00

**PMT Pin**- Brass with acrylic coating with a pin for your hat or vest ..... \$3.50

PMTA Car Tag—white, plastic tag with full color PMT logo (reduced; were \$5) \$4.00



### **What's with all the dead trees along/near the trails?**

During the summer till late fall of 2016 there was an extended period of time that it did not rain. This drought and its effect started showing up by the spring of 2017. Many 6-8" mainly oak trees died first and then larger trees. The most affected areas are near Fox Den Cove Parking Lot on the PMT, all along the Sawtooth Trail, from Mile 14 east to about Mile 15 (some 30% plus of the trees near Dowdell's Knob are dead/dying), all along the White Candle Trail and part of the Beaver Pond Trail south of GA 190 west to the PMT and around Rocky Point down west to about Mile 17.7. The dying trees (those without leaves and some with) exhibit a grayish streak bark. This is not just a few trees but hundred. As noted elsewhere in this newsletter, help by reporting downed trees as correctly as possible. Come upon a dead limb across the trail? Try to move it yourself please.

### **Pine Mountain Trail re-route west of Bumble Bee Ridge..**

Back on May 19<sup>th</sup>, the trail was finally re-routed as you go downhill off Bumble Bee Ridge west to the original route. Somehow, years ago the trail got changed via a short-cut and the trail got marked as such going nearly straight downhill. The real trail path was re-outlined with stone and an original "Malon Wickham" set of steps were added to also. The grade of the original path is a lot less steep than the old path which was blocked off. So if you are coming east away from Cascade Falls and past that last creek crossing before coming uphill, just as you start uphill the re-route (original path) now is slightly off to the right, then makes a left turn and levels out. The old path was quite steep and worn and actually a pain to get up. Thanks to all the volunteers who helped.



## 2018 PMTA Board of Directors

Chris Largent, President.....	706-580-9549	Columbus
Mike Riffle, Vice President .....	706-464-3136	Cataula
Sam Burke, Finance .....	706-563-1635	Midland
Jim Hall, Secretary .....	706-569-0497	Columbus
Tom Berry, Treasurer.....	334-291-9568	Phenix City
Carl Carlson, Trail Maint. Chairman Emeritus ..	706-628-5336	Pine Mtn.Valley
Jerry Brown, Membership Chairman ..	706-323-9422	Columbus
Richard Ramey .....	706-323-3925	Columbus
Jim Pound .....	706-323-1783	Columbus
Malon Wickham .....	706-563-5160	Columbus
Tom Flournoy .....	706-324-4000	Columbus
Eddie Hall.....	706-327-3697	Columbus
Mark Hughes.....	706-302-0118	LaGrange
Bill Vang.....	706-568-0611	Columbus
Joe Wade .....	706-324-7296	Columbus
**D. Neal Wickham, Member Emeritus who passed away May 18,2016.		



Chopped on tree at Old Sawmill Campsite!.

## Presidents Message

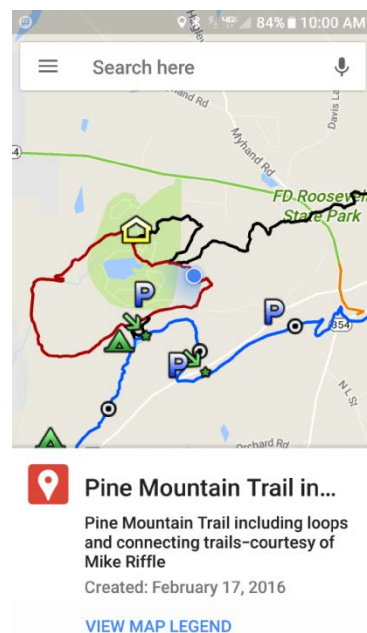
The two of us would like to thank those who have worked on Trail sections, maintaining them during this year. Thanks too, for those who showed up and helped with the scheduled work days. As Jim noted on the first page, we need a lot of you reading this to step up and work just one workday over the next year. Having 15+ folks show up each workday helps us to plan task to be done and get completed. Weed-eating/trimming along Mile 13 west to Hines Gap Road and then last month on the Beaver Pond Trail just north of GA 190, was done by small group of volunteers working in some hot conditions.

from Chris Largent & Mike Riffle

We want hikers and backpackers to enjoy the trails, but also realize they don't get maintained unless we do it. The weather is getting cooler finally and the leaves are starting to turn. Think about coming up to help on a workday then after lunch you can take a hike on your own or with folks you worked with.

## Reporting blowdowns, reporting lost or hurt hikers you meet or seeking help for yourself.

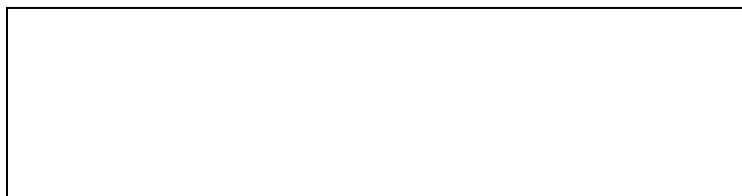
Reporting accurately a blown down tree blocking the trail is important. Accuracy saves volunteers a lot of time, and lets them know better not only where the tree is but what size chain saw if any is needed to clear it. **So what is the best way to report a blowdown?** Take a couple photos (from the trail on each side of it) then if you have cell service on a smart phone you can go to our website [www.pinemountaintrail.org](http://www.pinemountaintrail.org) and click on the first tab, LOST ON THE TRAIL. With Google maps it will show an interactive character map and a circle noting where you are. "Screen shot" that map. Then go back to our website and down at the bottom of the first page is "contact us".....Send an email and give your name and phone number (in case we have a question) and the photos of the tree and the map. This way we can see accurately the location of the blowdown. Many have reported blowdowns as being "just a few minutes from" and GPS coordinate, and that is not as helpful or accurate a description as the map and tree photos. **Seeking help on the trail for yourself or someone you meet?** Get the map up on your phone as noted above, screen shot it and when you call the park rangers emergency numbers on the back of the map (NOT 911), tell them you are going to text them a screen shot of the map showing where you are or another hiker is. You can also use the map and photos to help report other things (such as yellow-jacket nest, smoldering fires, other possible unsafe conditions.) The map to right, is one Mike Riffle sent noting a tree down on Mountain Creek Trail just east of the Pool Trail intersection.



## Pine Mountain Trail Association Newsletter

P.O. Box 5

Columbus, Georgia 31902



Check the **RENEWAL DATE** on the address label (above your name). Don't miss a newsletter—**RENEW** early. Thanks!

HIKES*	LEADER	MEET AT:	HIKING:	DISTANCE:
Nov 3 1:30 PM	Jim and Mark	FDR Park Office	Fox Den Cove PL to Big Knot Campsite	
<b>OVERNIGHT BACKPACKING TRIP</b> (FREE - reservations required to Jim at <a href="mailto:jim@msn.com">pinemttrailassoc. jim@msn.com</a> )				
Nov 10 6:00 PM.	_____	No Name Parking Lot	Mountain Creek Trail	3.2
<b>NIGHT HIKE</b>				
Nov 17 1:30 PM	_____	FDR PARK Office	PMT from Office to Country Store	3.9
<b>PRE PIGOUT HIKE</b> (Pig Out dinner at Large Group Camp Dining Hall/Event Center starting at 4:30 Dinner at 5:40)				
Dec 8 10:00 AM	_____	FDR Office	PMT -Mt Creek - Pool Trl - Fox Den Cove PL	4.4
Jan 1 10 :00AM	_____	Dowdell's Knob Trailhead	Dowdell's Knob Loop	4.3
<b>FIRST DAY HIKE 2019</b>				
Jan 21 10:00 AM	_____	Rocky Point PL	PMT to Mile 23/WJSP TV Tower	5
<b>MLK HOLIDAY HIKE</b>				
Feb 16 10:00 AM \	_____	Molly Hugger Hill PL	PMT to Fox Den Cove PL	5
Mar 16 10:00 AM	_____	Molly Hugger Hill PL	Sawtooth Trail to Fox Den Cove PL	2.7
April 6 10:00 AM	_____	Rocky Point Parking Lot	PMT to Boot Top Trail to Boot Top Parking	2.2

### WORKDAYS\* (Bring work gloves, water and your snacks. We furnish all tools and fun.)

Date	Time	Meet up with other PMTA volunteers at:	Workday leader:
October 13	10 a.m.	FDR State Park Office Parking Lot	_____
November 10	10 a.m.	FDR State Park Office Parking Lot	_____
December 1	10 a.m.	FDR State Park Office Parking Lot	_____
Jan 12	10 a.m.	FDR State Park Office Parking Lot	_____
Feb 9	10 a.m.	FDR State Park Office Parking Lot	_____
March 9	10 a.m.	FDR State Park Office Parking Lot	_____
April 13	10 a.m.	FDR State Park Office Parking Lot	_____

(All workday meeting places start at Park Office.....Dates subject to change—especially if bad weather....Keep checking the website and our Facebook page each month prior to a workday)\***For all hikes and workdays, it is a good idea to bring water and a snack (a lunch if the hike or workday starts at 10 a.m.)** FOR INFORMATION ON WORKDAYS, CALL Mike Riffle at 706-464-3136 or Chris Largent at 706-580-9549